

## PROGRAM CONTENT

	TIME	TRAINING CLASS
Presentation, introduction, objectives.	30 minutes	
Emergency lifting principles.	01h30 hour	
Familiarization with tools and equipment.	02h00 hour	Physical Presence
Practices in simulated scenarios involving large size or heavy load objects.	30h30 hour	
Evaluation and closure.	30 minutes	
<b>TOTAL</b>	<b>35 hours</b>	

## ACTION SCHEDULE

### BLOCKS OF TIME

09H00 - 09H30  
09H30 - 11H00  
11H00 - 13H00  
13H00 - 14H00  
14H00 - 17H00

### 1<sup>st</sup> Day | 7 hours training

Presentation, introduction, objectives.  
Heavy Rescue principles.  
Familiarization with tools and equipment.  
Lunch.  
Practices in simulated scenarios.

### 2<sup>nd</sup> Day | 7 hours training

09H00 - 13H00  
13H00 - 14H00  
14H00 - 17H00

Practices in simulated scenarios.  
Lunch.  
Practices in simulated scenarios.

### 3<sup>rd</sup> Day | 7 hours training

09H00 - 13H00  
13H00 - 14H00  
14H00 - 17H00

Practices in simulated scenarios.  
Lunch.  
Practices in simulated scenarios.

### 4<sup>th</sup> Day | 7 hours training

09H00 - 13H00  
13H00 - 14H00  
14H00 - 17H00

Practices in simulated scenarios.  
Lunch.  
Practices in simulated scenarios.

### 5<sup>th</sup> Day | 7 hours training

09H00 - 13H00  
13H00 - 14H00  
14H00 - 16H30  
16H30 - 17H00

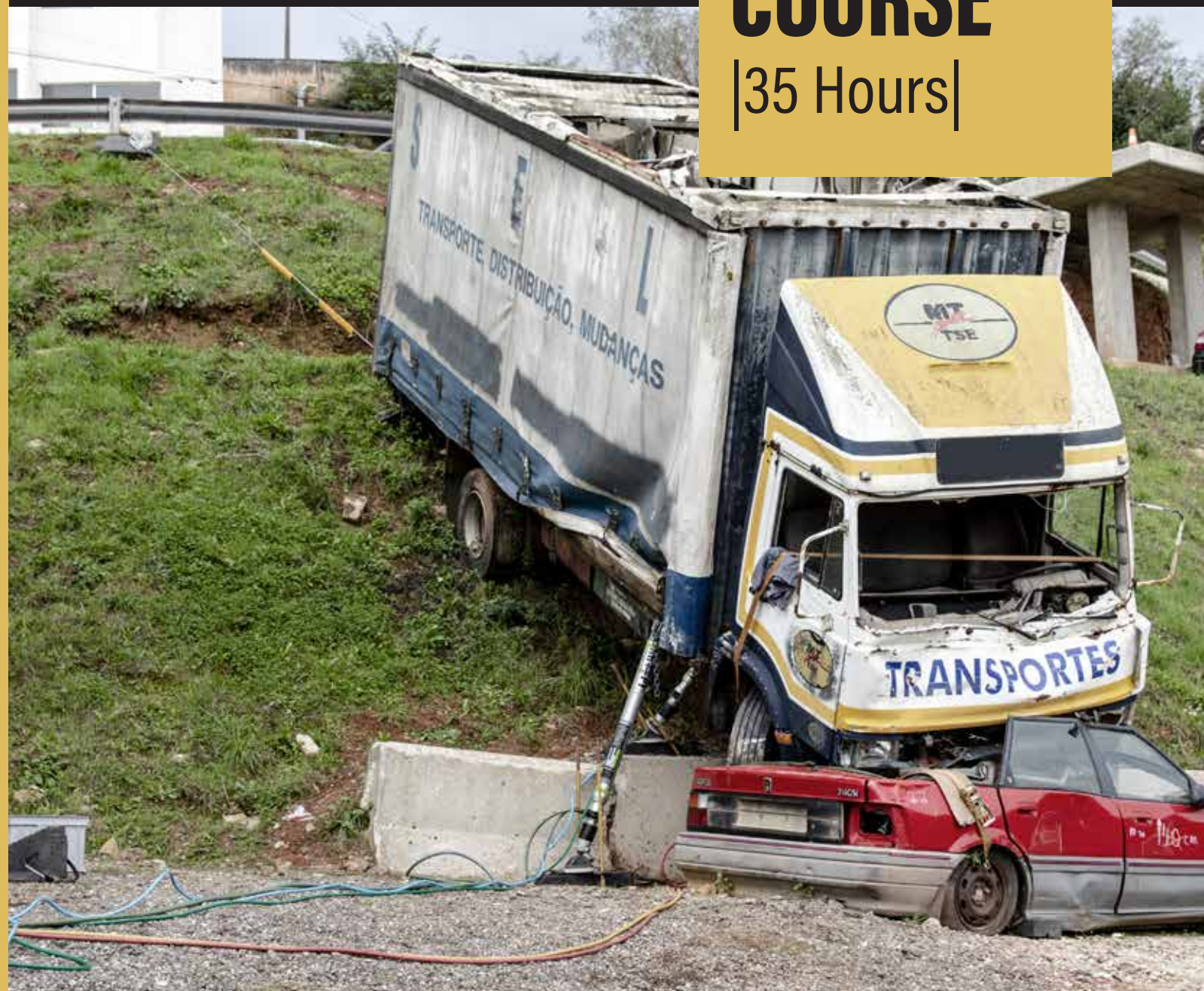
Practices in simulated scenarios.  
Lunch.  
Practices in simulated scenarios.  
Evaluation and closure.



**W** [www.heavyrescueportugal.com](http://www.heavyrescueportugal.com)  
**E** [training@heavyrescueportugal.pt](mailto:training@heavyrescueportugal.pt)  
**T** +351 963045051 | +351 964839446

# HEAVY RESCUE ADVANCED COURSE

|35 Hours|



**RESQTEC**®

in partnership with HR-PT

**HR-PT**  
ESTABILIZAÇÃO | ELEVAÇÃO | SALVAMENTO



# TRAINING IS THE TOOL THAT SEPARATES IMPROVISE FROM TECHNICAL COMPETENCE



Rescue scenarios with victims entrapped under heavy loads or large-sized objects are common worldwide.

Most of the time, when one of these scenarios happens, the usual extrication techniques aren't enough to create space and perform the victim's extraction. It is common in these scenarios the need to lift the object enough space to extricate the victim.

The Heavy Rescue training course will provide the tools to separate improvise from technical competence in complex scenarios involving trucks, buses, trains, and all kinds of heavy machinery.



## TRAINING AREA & DEFINITIONS:

### HEAVY RESCUE ADVANCED course | 35 Hours |

The permanent challenges in the pursuit of developing road safety have found expression in the decrease of road accidents. However, the number of victims registered on the world's roads each year necessitates that rescue teams keep their knowledge up to date.

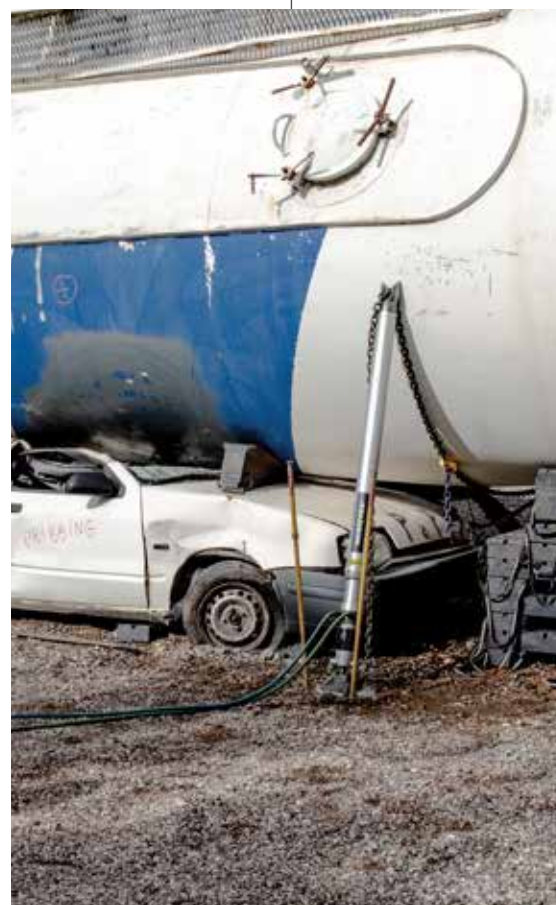
In the case of the rescue of victims in accidents involving large or heavy objects, or heavy machinery, there is an increased challenge and, consequently, more risk for the rescue teams. The preparation of the response to this kind of accidents is essential for rescue process optimization and safeguarding of human life.

These kinds of training courses intend to provide the participants the opportunity to improve the "art of creating space" in complex scenarios with lifesaving needs and heavy loads or large sized objects involved.

## TOP 3 LEARNING GOALS:

**HEAVY RESCUE course** will provide advanced space creation and stabilization skills applied to complex accidents involving heavy loads or large-sized objects.

1. Emergency Lifting: control and stability of the object.
2. Dealing with heavy loads or big objects: stabilization and following the load.
3. Rescue or Recovery: modern space creation techniques with a special focus on safety.



## ENTITY:

### Heavy Rescue Portugal (HR-PT)

**HR-PT's** core mission is to provide modern and innovative training and practise that is of high quality and formative accuracy in order to provide its trainees with world-class professional and human skills.

**HR-PT** chases, every day, the development of the most modern space creation techniques for light and heavy vehicles, buses, train carriages, and heavy machinery.

**HR-PT** provides reference training in the scope of rescue and protection of persons and property, decisively promoting a safety culture.

**HR-PT** provides worldwide training with references all across the world.

## COURSE OBJECTIVES:

Provide participants with theoretical and practical knowledge, allowing them to safely perform rescue operations on victims in accident scenarios involving large or heavy objects.

Participants must be able to perform the following tasks by the end of the training sessions.

- Stabilization of scenarios, ensuring safety conditions in the whole rescue process;
- Space creation techniques, in particular, emergency lifting techniques, in 7 or 8 different scenarios involving large or heavy objects.
- Conservation and maintenance of different types of equipment.